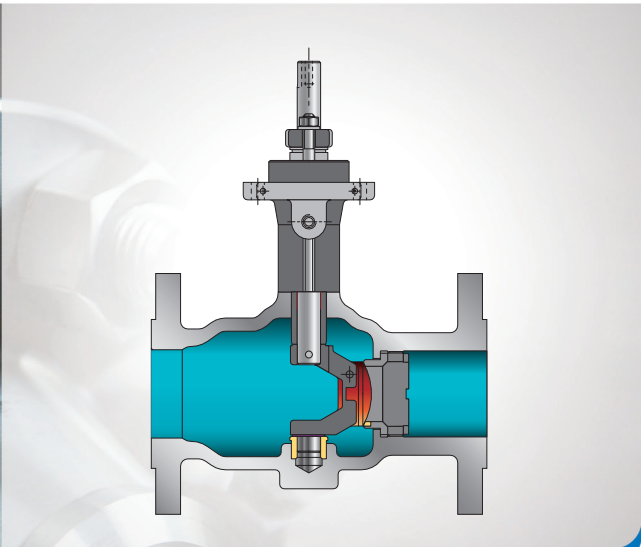


PNEUMATIC ACTUATOR
LP1®



version 06/2020



USE

The multi-spring diaphragm pneumatic actuators of **LP1** type are applied for control operation of control valves and other positioning elements in industrial automatic systems.

There are three design options of the actuators:

- direct action (air - ejects the stem)- type P1,
- reverse action (air - retracts the stem)- type R1,
- direct action, handwheel- type P1B,
- reverse action, handwheel- type R1B

FEATURES

- completely reversible action, option to change spring range w/o extraparts,
- rigid structure of cast yoke,
- wide range of available forces,
- linear dependence of stem movement from control pressure, due to application of diaphragms with constant effective area,
- various spring ranges achieved by changing the number of springs and/or changing position of spacer elements,
- capability of the actuator to incorporate side-mounted handwheel, pneumatic or electro-pneumatic positioners, limit switches, air sets, three-way pneumatic solenoid valves, lockup valves, position transducers,
- high strength of diaphragms, springs and packings,
- low weights and small overall dimensions.

TECHNICAL SPECIFICATION

- | | | |
|-----------------------|---|--------------|
| - input signal range: | 20...100 kPa; 40...120 kPa; 60...140 kPa | - 3 springs |
| | 40...200 kPa; 80...240 kPa; 120...280 kPa | - 6 springs |
| | 180...380 kPa | - 12 springs |

Doubled number of springs (TANDEM version) for the 1500T actuator

- | | |
|-------------------------|---|
| - max. supply pressure: | 400 kPa (450 kPa for the range 180...380 kPa) |
| - working temperature: | - 40...+80°C |
| - relative humidity: | max. 98% |

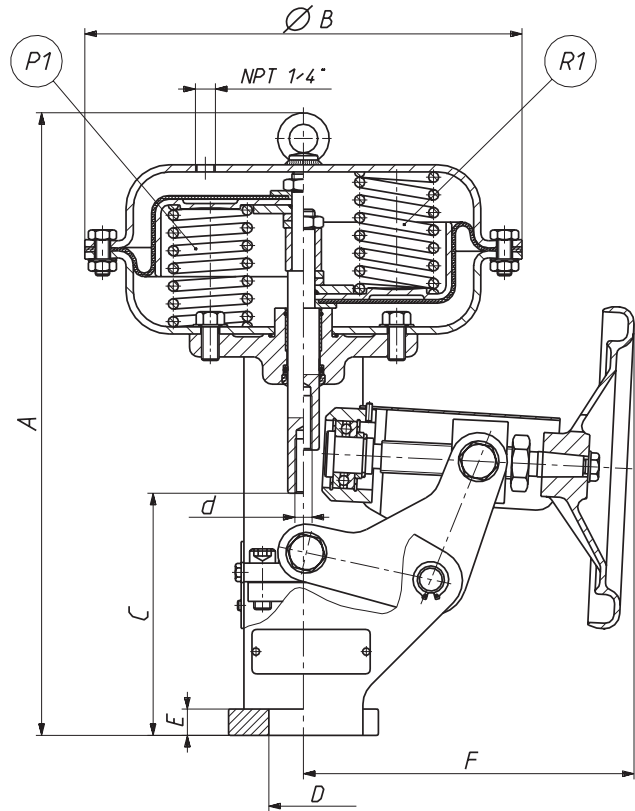
Diaphragm effective area	Stroke	Spring range
[cm ²]	[mm]	[kPa]
400	20	1...6
630	20; 38	1...7
1000	38; 50; 63	
1500	38; 50; 63; 80; 100	
1500T	50; 63; 80; 100	



DIMENSIONS AND WEIGHTS

Actuator size	A	B	C		D	E	F	d
			P1; P1B	R1; R1B				
[mm]								
400	453	305	127	100	57,15	17,7	255	M12x1,25
630	548	375	127	107		17,7		280
1000	773	477	153	90	57,15	17,7	340	M12x1,25 M16x1,5 M20x1,5
					84,15; 95,25	22,5		
1500	833	550	184	102	57,15	17,7	410	M12x1,25 M16x1,5 M20x1,5
					84,15; 95,25	22,5		
1500T	1138	550			84,15; 95,25			M24x1,5

Actuator size	Weight	
	P1; R1	P1B; R1B
	[kg]	
400	20	28
630	40	50
1000	85	105
1500	120	150
1500T	225	255





VALVEA s.r.o.

Sídlo firmy:

Oldřichovice 1044
739 61 Třinec
Česká republika
tel.: +420 558 321 088
email: info@valvea.eu
web: www.valvea.eu